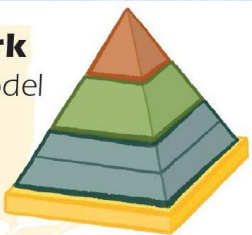




Disclaimer: The Pyramid Model Took Kit professional development videos are not made to replace the full Pyramid Model Infant Toddler and PreK Modules.

This video is made to supplement and support the implementation of Pyramid Model tools.

New York
Pyramid Model
State



Promoting Social & Emotional Competence in New York's Young Children



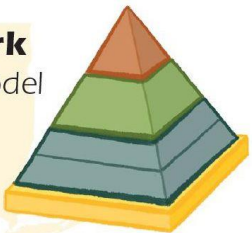
**THE
PYRAMID MODEL
CONSORTIUM**

Supporting Early Childhood PBIS



Pyramid Model Tool Kit: Classroom Visual Display Kit

New York
Pyramid Model
State



Promoting Social & Emotional Competence in New York's Young Children



**THE
PYRAMID MODEL
CONSORTIUM**

Supporting Early Childhood PBIS

In this module you will learn:

- What is included in the visual display kit
- Why visuals are important
- How this kit supports your Pyramid Model practices
- Ideas on how you can use the content of the kit in your classroom
- Suggestions for other Pyramid resources that could be helpful for families



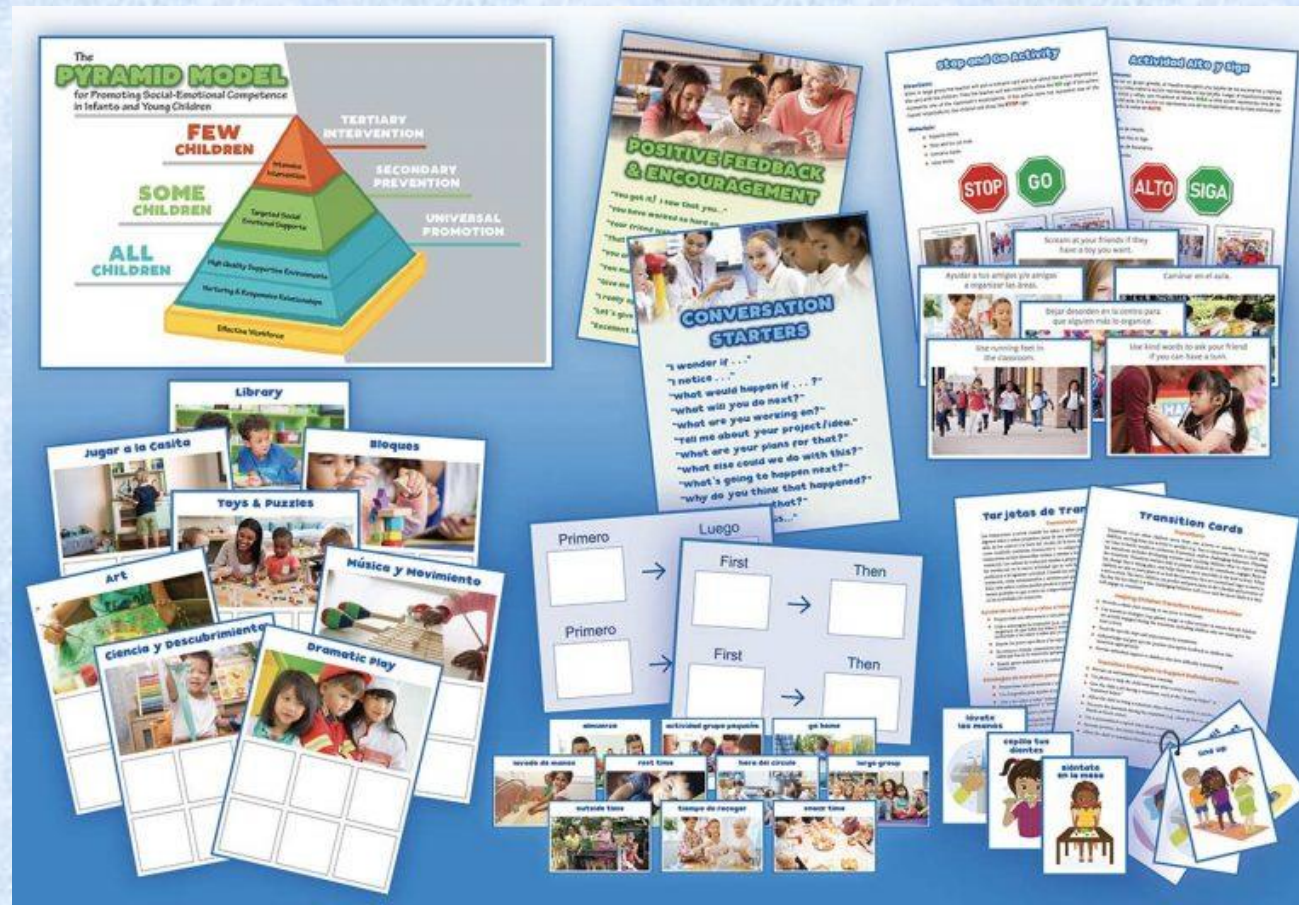


Opening the Kit!
What's inside?



The Classroom Visual Kit Includes:

- Positive Feedback Poster
- First Then Board
- Check-in Center Boards
- Transition Cards w/Ring
- Stop & Go Signs
- Stop & Go Scenario Cards



- First Then Cards
- Daily Schedule Cards
- Transition Instructions
- Conversation Starters Poster
- Pyramid Model Poster



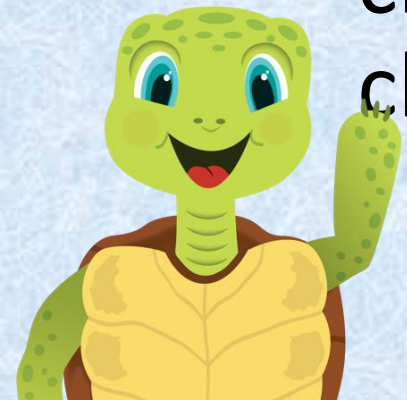
Assembling your materials

- Pre-cut boards and cards need to be separated
- Whole punched cards should be put on the ring provided
- Keep first and then boards and daily schedule cards together
- You may need Velcro or tape to use the cards on the board



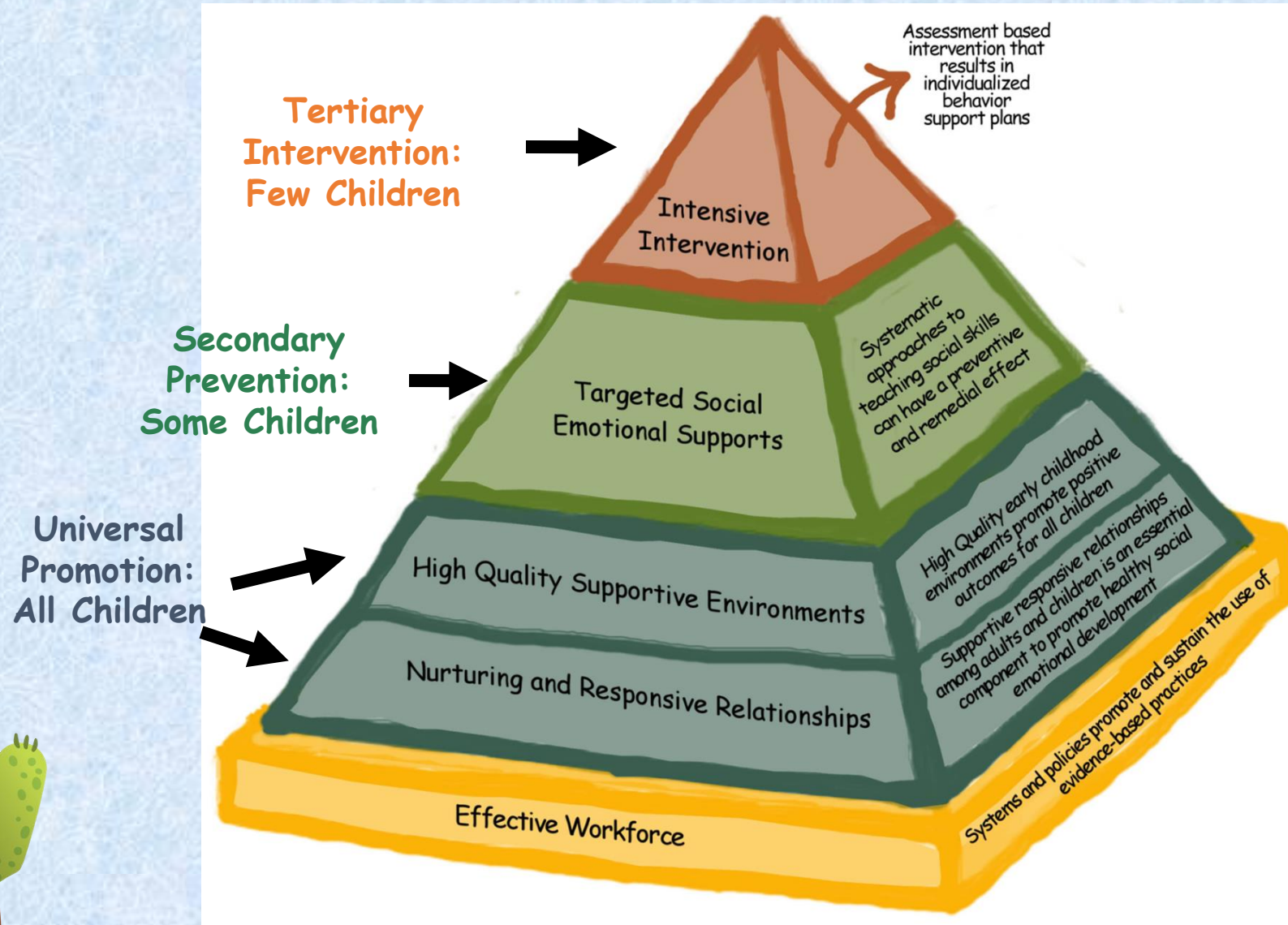
Using Visuals in the Classroom

- Teaching children routines, rules and expectations are common practice in most preschool classrooms.
- When used regularly, children can develop a clear understanding of what is expected of them and what they can expect in their classroom.
- When Visual supports are incorporated, they give children a reference and guidance and help them choose how to behave.



The Pyramid Model:

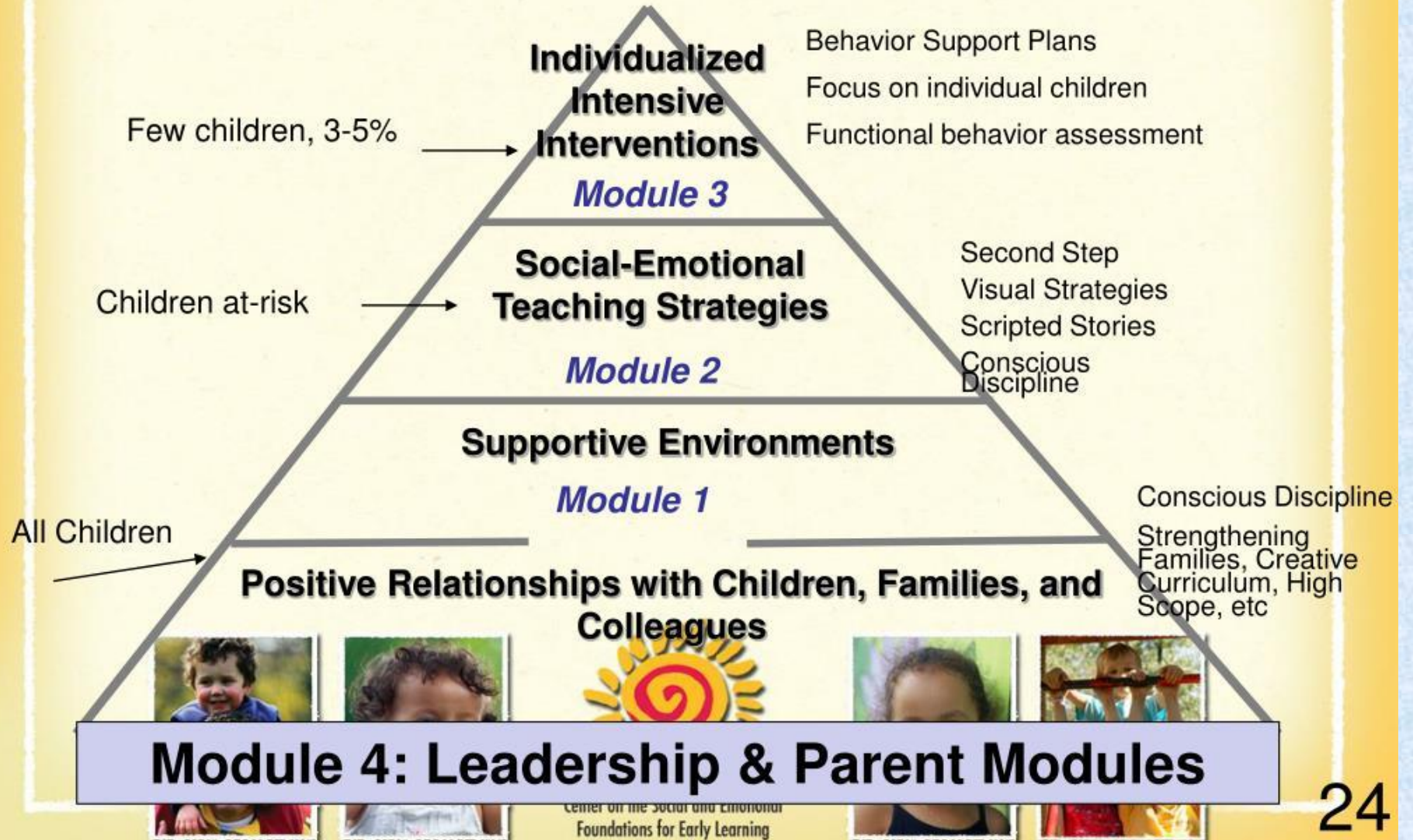
Promoting Social and Emotional Competence and Addressing Challenging Behavior



The Pyramid to Promote Social & Emotional Competence

[Click here to learn more:](#)

[PBIS/Pyramid Model/CASEL SEL Crosswalk](#)



Visual Supports in the Classroom:

Few children or one child:

- First Then Board
- Transition Cards w/ Ring
- Stop & Go Signs
- Daily Schedule Cards
- Transition Instructions

Some children:

- First Then Board
- Transition Cards w/ Ring
- Stop & Go Signs
- Daily Schedule Cards
- Transition Instructions

• All Children:

- All of the kit items!



Visual Supports in the at HOME

- Ideas for Families:
 - Make a copy of the scenario cards and stop/go signs for your students to practice at home with their families
- Family Visual Supports
 - https://challengingbehavior.cbcs.usf.edu/docs/Routine_cards_home.pdf
 - https://challengingbehavior.cbcs.usf.edu/docs/backpack/BackpackConnection_routines_visual-schedules.pdf



Visuals in Action!



Visuals in Action!



Visuals in Action!



Questions?

Visit these resources



[National Center for
Pyramid Model
Innovations website](#)



[The Pyramid Model
Consortium](#)



[The Discovery
Source](#)

or contact
Tracy Lyman

LymanPyramidModel@gmail.com

